

Fostering Regional Protected Area Cooperation: The Case of the EUROPARC Federation and the Establishment of the Naoli River Wetland Network in China



Jens Brüggemann
Senior Project Manager

Sino-German Project
Wetland Biodiversity Conservation in China
Deutsche Gesellschaft für Internationale
Zusammenarbeit (GIZ) GmbH

1. Introduction and Context

The Deutsche Gesellschaft für Internationale Zusammenarbeit (**GIZ**) GmbH in China

- International cooperation enterprise for sustainable development with worldwide operations

在世界范围内开展可持续发展合作

- For public benefit, federally owned

隶属于德国联邦政府的公益机构

- Policy advice to support China's reform process

在中国改革过程中提供政策建议

- Capacity building for partner-country experts

为伙伴国家提供专家能力建设

- Cooperation with NGOs and businesses

与企业和非政府组织合作



Commissioned by:
German Federal Ministry
for Economic Cooperation
and Development (BMZ)

07/ 2010 – 12/2014

Sino-German Project
Wetland Biodiversity Conservation in China

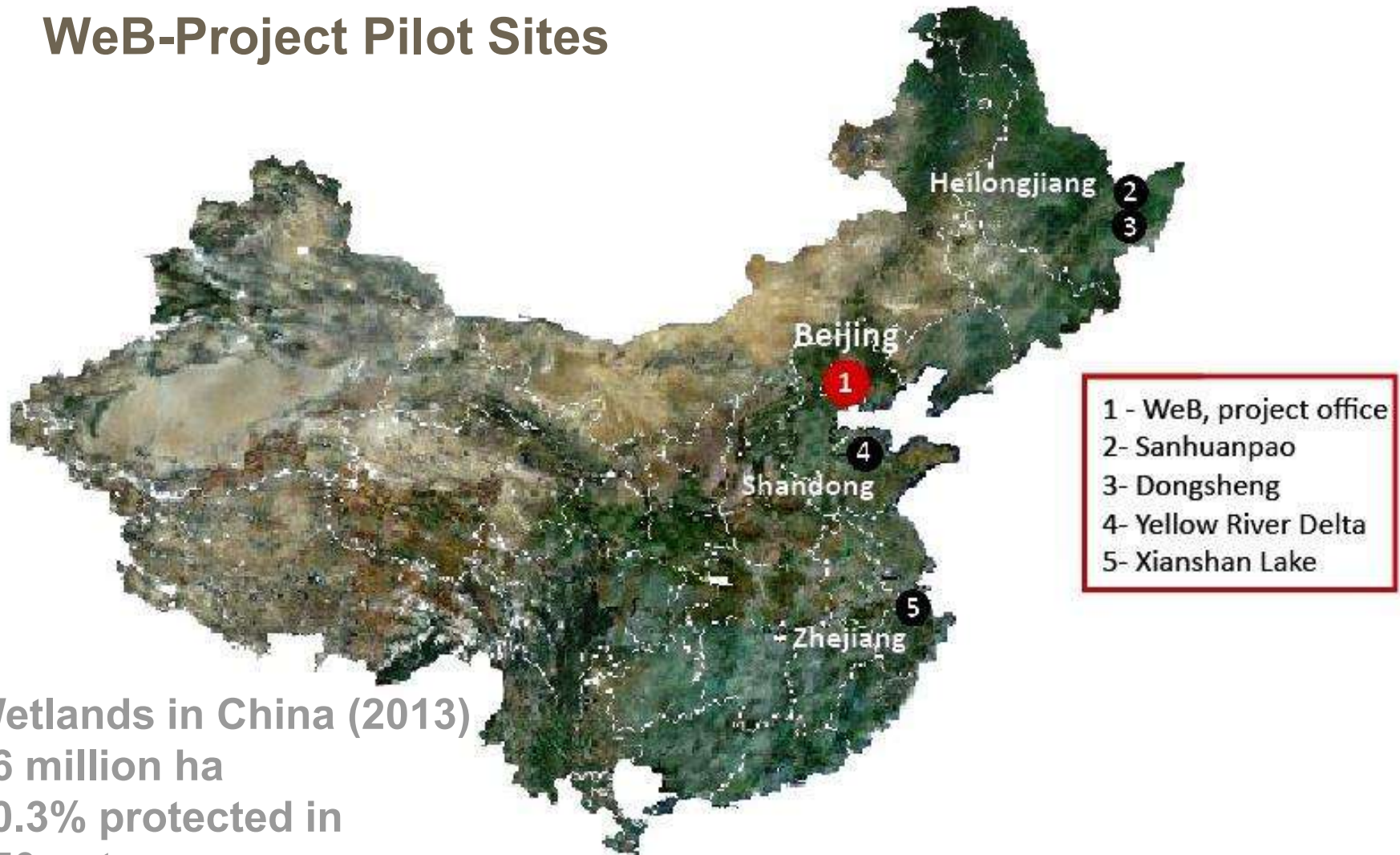
The **implementation of an integrated ecosystem approach** by public stakeholders and user groups contributes to securing biodiversity and sustainable use of wetland resources in China.

Cooperation Partner:
Office of Wetland Conservation
and Management of the State
Forestry Administration



Implemented by: **giz** Deutsche Gesellschaft
für Internationale
Zusammenarbeit (GIZ) GmbH

WeB-Project Pilot Sites



Wetlands in China (2013)

36 million ha

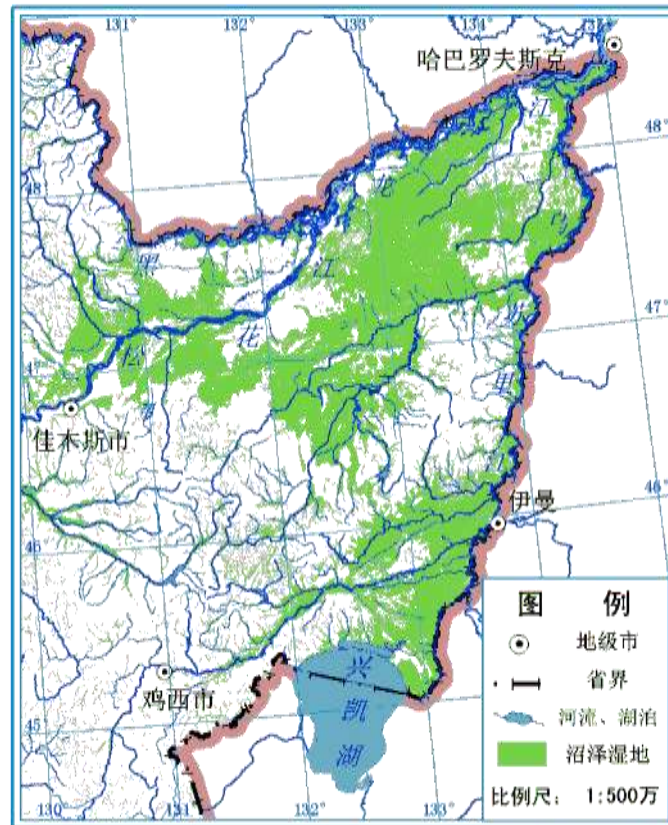
50.3% protected in

550 nature reserves

430 wetland parks

Marshland in Sanjiang Plain

三江平原50年代沼泽湿地分布图



1950s: 5 million ha

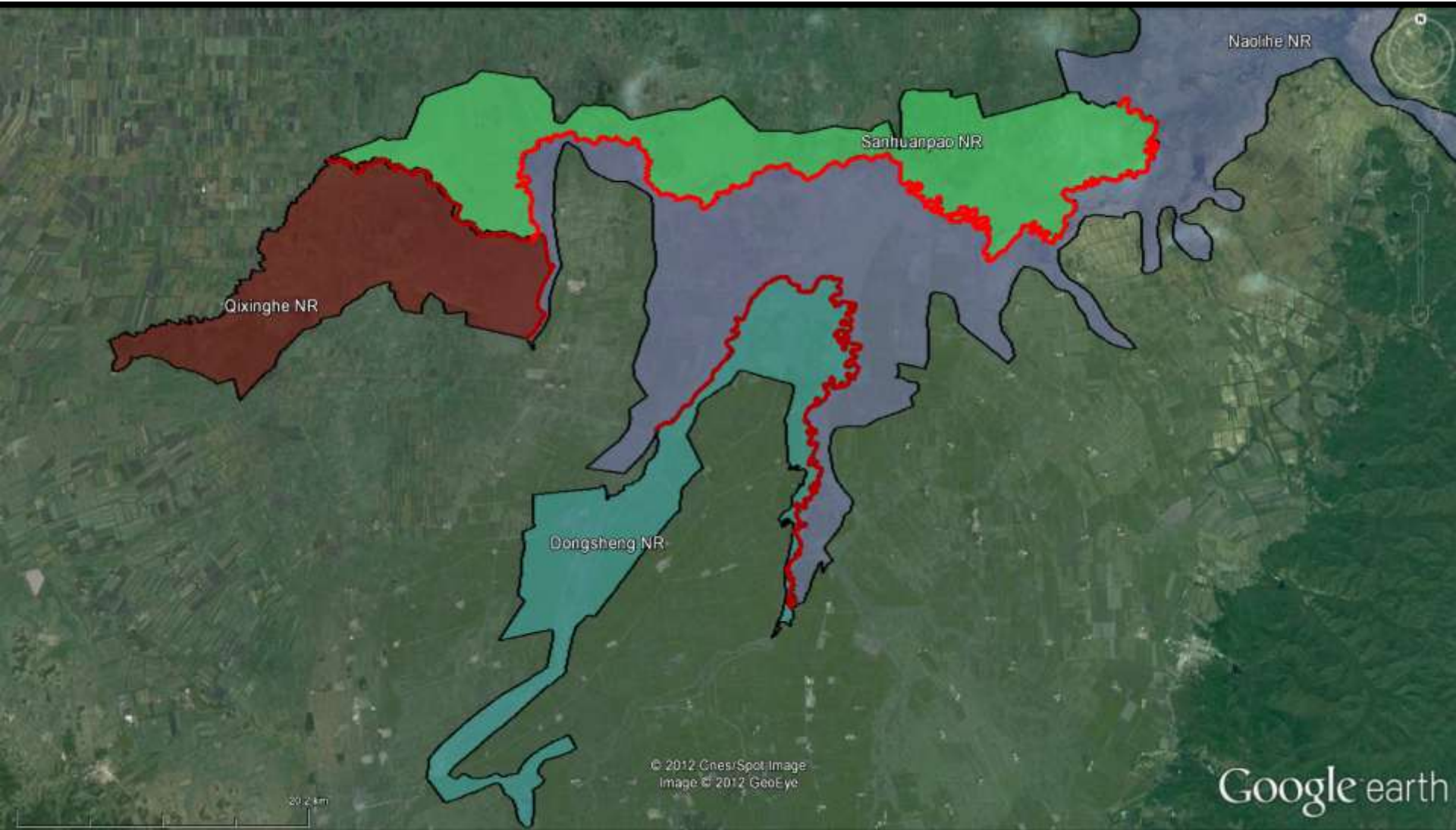
三江平原2000年沼泽湿地分布图



2000: 1.35 million ha

Source: Yan (2011)

Nature Reserves along the Naoli River, Sanjiang Plains



2. The EUROPARC Experience



Study Tours to Europe



EUROPE
Political Map

Jan Mayen (NO)



1. CZECH REPUBLIC
2. AUSTRIA
3. SLOVENIA
4. CROATIA
5. MONTENEGRO
6. KOSOVO
7. MACEDONIA

0 500 1000 Km
0 250 500 Miles

LEGEND
Country Capital

The EUROPARC Federation



- Founded in 1973
- 400 members in 39 countries
- Objectives:
 - Promote good practice in the management of protected areas,
 - Promote cooperation and exchange among managers and experts, and
 - Promote their objectives and work in Europe
- Headquarters in Regensburg, Germany, with international staff
- Brussels Office since 2007
- Projects and Programs: see www.europarc.org

Members of EUROPARC:
mainly protected area administrations

Müritz National Park

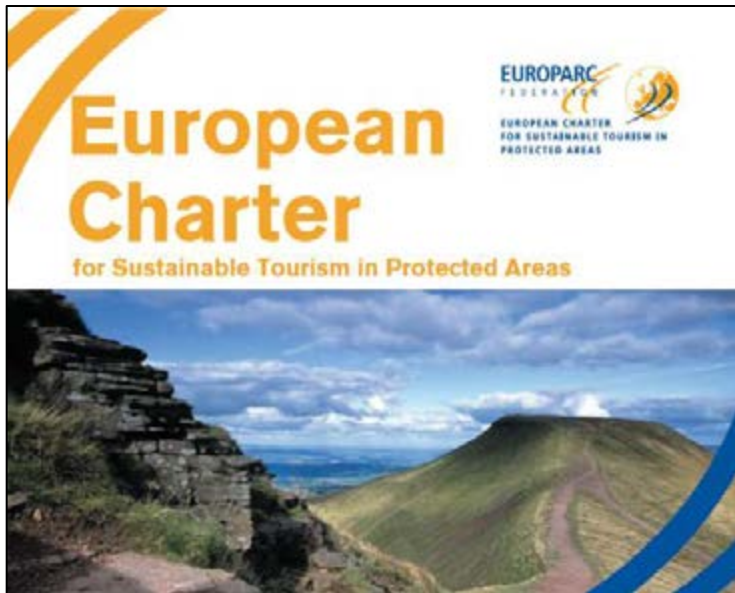
The voice of European protected areas

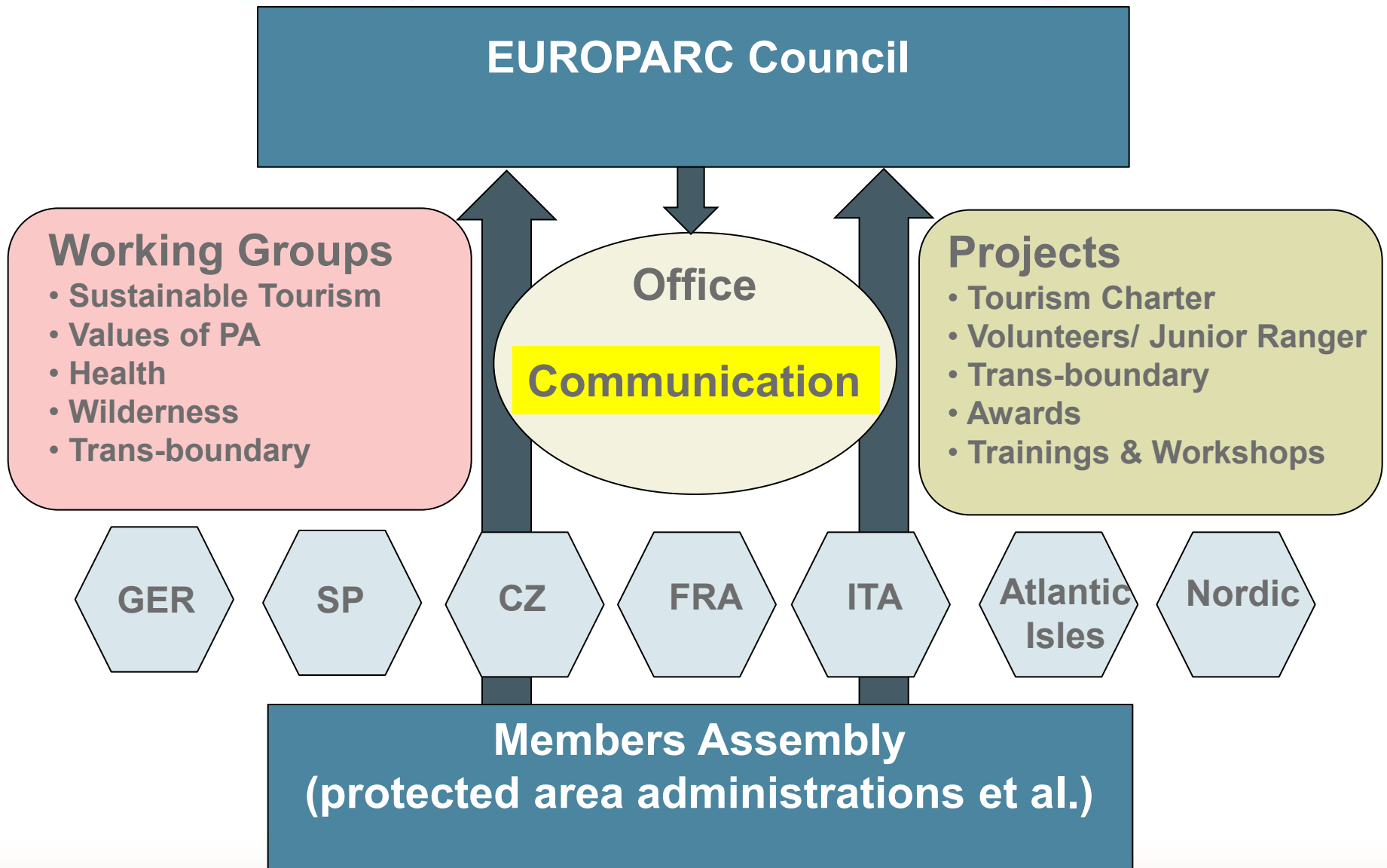


Common management standards and practices

European Charter as a tool
for Sustainable Tourism

Trans-boundary Cooperation
Certificate





Resources for the membership and from the membership

- Expert Advice
- Project Development
- Capacity Building
- Policy Recommendations
- Communication – Networking – Exchange



3. Establishment of the Naoli River Wetland Network

- 5 Nature Reserves along the Naoli River
- Different authorities but similar pressures
- Benefit of unified management and cooperation
- Motivation by provincial level and support from WeB project
- Inauguration on 14 November 2012



NRWN Framework

Members:

Heilongjiang Provincial
Wetland Conservation and
Management Centre

Nature reserves of

- Qixinghe
- Naolihe
- Dajiahe
- Sanhuanpao
- Dongsheng

Objectives

- Mainstreaming of Management Objectives
- Capacity Development (staff training, organizational and institutional capacity development)
- Support for solving management problems and integrated (common) responses to pressures and threats

Annual Meeting: Work Plan Revision

Financing: Cost-sharing arrangements and project funding

NRWN Activity: Training in ecosystem assessment



NRWN Activity: Training in management planning



NRWN Activity: National Study Tour to East China



4. Conclusion and Outlook

- Driver: interest of members, must perceive tangible benefits
- Coordinating body (government agency/ NGO)
- Expert advice to be invited when necessary
- Ad-hoc working groups on issues of common interest
- Sustainability Challenge/ Financing Concept
- Enlargement Possibility
 - Geographic scope
 - Engagement of other sectors and stakeholder

Thank you for your attention !

Contact:
jens.brueggemann@giz.de